

## SonarQube Connector for Jira

### GADGET CONFIGURATION

Since 1.9 version you can view the SonarQube issues associated with a project or several from a gadget.

SonarQube Connector for Java

⚙️ Connection settings

SonarQube Server URL

https://sonarcloud.io/

This is the base URL of your SonarQube installation such as https://yoururl.yourdomain.com/

Taken

This field is optional. If your SonarQube instance is not public, then you will need to setup this field with the security token from a SonarQube user in order to make requests to the server

📊 Visualization settings

Show history charts

Check this option if you want to show history measure charts for each individual project's card

Group projects cards

10

Limit group of individual projects' cards to show in panel. By default it will displayed in range of 5. == This option only works if you have "Show history charts" option active.

Show bugs

Show vulnerabilities

Show code smells

Check these option to filter sonarqube findings by: bugs, Vulnerabilities and Code Smells

Report settings

Resource Key

This is the key of the SonarQube resource where you are going to retrieve the quality metrics. You can get this key from your SonarQube project dashboard or your sonar-project analysis parameters.  
You can skip more than one resource/key by providing a comma separated list of resource keys. Measures will be aggregated into a unique view of all the projects together.  
== Only on [SonarQube Enterprise Edition]: You can setup a portable key as a resource and all the related projects keys will be retrieved automatically. This feature is available for commercial editions.

Tags

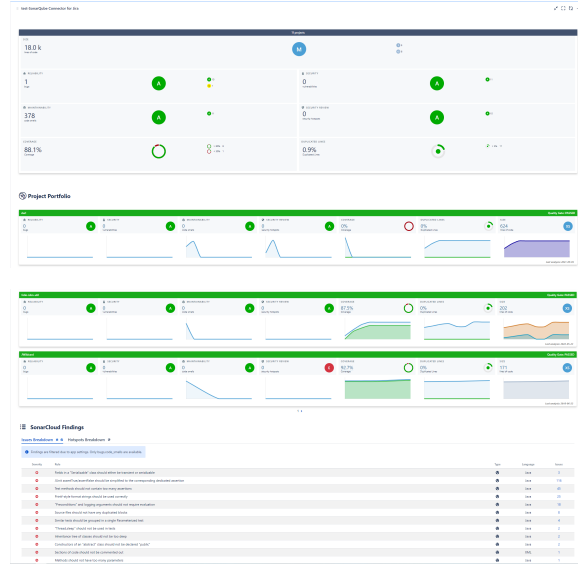
You can skip more than one tag by providing a comma separated list of tags. Measures will be aggregated into a unique view of all the projects together.

Custom metrics

List of custom metric keys to display in the dashboard, you can specify 1 or a list of metric keys separated by commas. For example blob\_violations, major\_violations, classes. Check with your SonarQube administrator to find out the keys to the available metrics

Save

Cancel



- **Connection settings:**
  - **SonarQube Server URL:** this is server base URL for your SonarQube Cloud installation
    - **Note :** the base URL for SonarQube Cloud is <https://sonarcloud.io>
  - **Token:** this field is optional. If your SonarQube cloud instance is not public, then you will need to setup this field with the security token from a SonarQube user. You can find more information about SonarQube tokens here: <https://docs.sonarqube.org/display/SONAR/User+Token>

Visualization settings:

- **Show history charts** : Check this option if you want to display measures history charts for each sonarqube project in Sonarqube Connector Panel Report.
- **Group project's cards** : Select this option to set number of project cards per page that will be displayed in Sonarqube Connector Panel Report.
- **Show bugs, vulnerabilities or code smells** : Check these options if you want to filter sonarqube findings by Bugs, Vulnerabilities or Code Smells.

Report settings:

- **Resource ID:** this is the key of the SonarQube resource where you are going to retrieve the quality metrics. You can get this key from your SonarQube project dashboard or your sonar-project analysis parameters.
  - **Note:** since version 1.4 you can setup more than one resource/project key by providing a comma separated list of resource keys. Measures will be aggregated into a unique view of all the projects together. See [section linking multiple projects to Jira](#).
- **Tags :** This is an optional field. You can get the projects through the tags associated with them in SonarQube/SonarCloud. These tags can be obtained from your project page in SonarQube/SonarCloud or from the analysis properties. You can configure more than one tag by specifying a comma separated list of tags. The results will be aggregated in a single view with all the resources together.
- **Issue type:** This is the default issue type to create new SonarQube issues
- **Custom metrics:** List of custom metric keys to display in the dashboard, you can specify 1 or a list of metric keys separated by commas. For example: blocker\_violations, major\_violations, classes. Check with your SonarQube administrator to find out the keys to the available metrics